



Planning for HIT/HIE: Wisconsin's Approach

**Denise Webb
State Health IT Coordinator
eHealth Program
February 8, 2010**



Overview

- Wisconsin's eHealth Program Background
- HITECH Landscape/Approach



Wisconsin eHealth Program Background

- 2006 eHealth Action Plan
 - Current rate of EHR adoption in Wisconsin is high
- Medicaid Transformation Grant #1 – HIE
- Health Information Security and Privacy Collaboration (HISPC)
- State-Level HIE Planning and Design
 - Phase 1

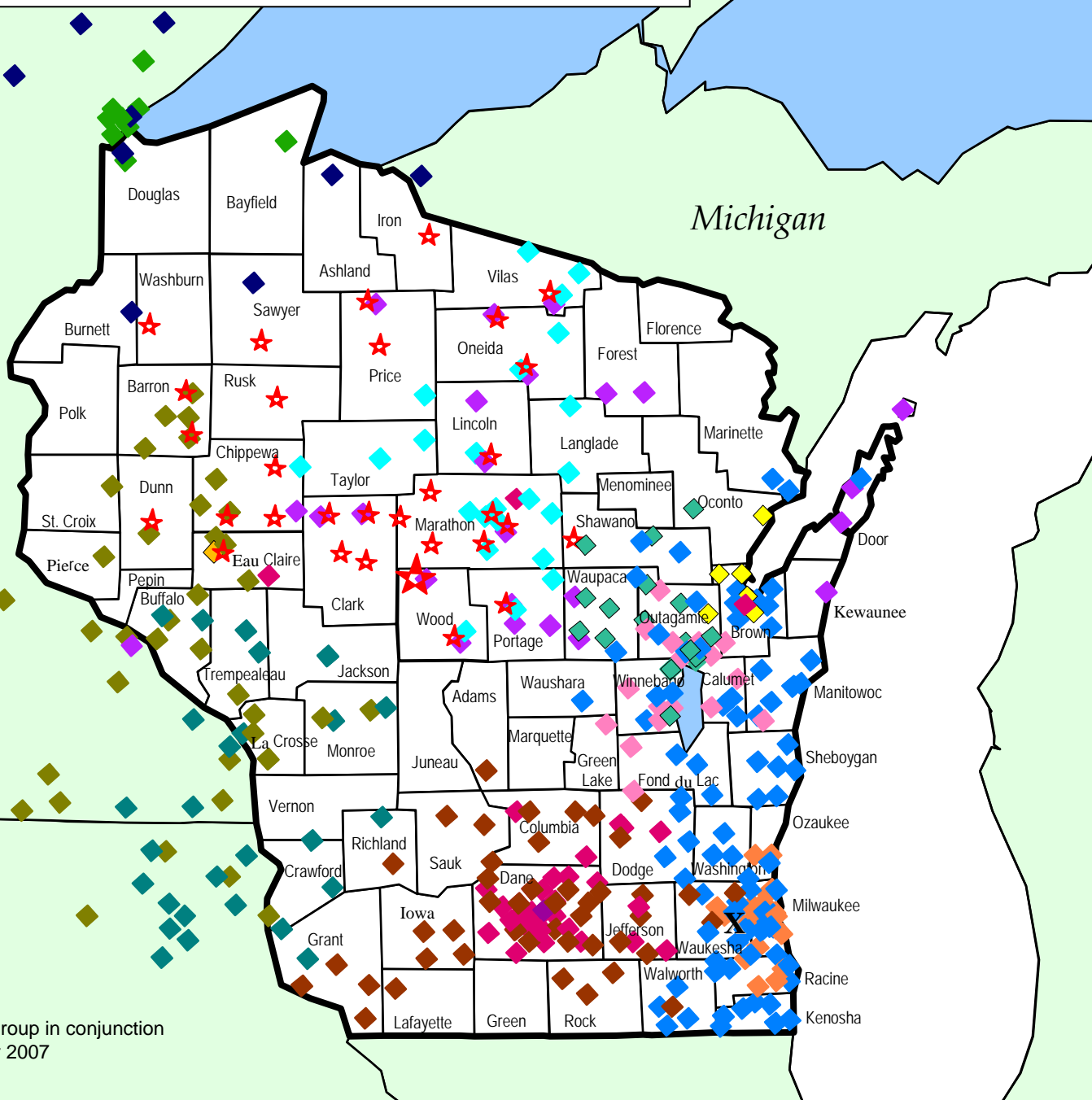
Major Health Care Systems

- ★ Marshfield Clinic
- ◆ Affinity
- ◆ Aspirus
- ◆ Aurora
- ◆ Dean
- ◆ Gundersen
- ◆ Mayo
- ◆ Ministry
- ◆ Oakleaf
- ◆ Prevea
- ◆ St. Luke's
- ◆ St. Mary's
- ◆ Theda
- ◆ UW Health
- ◆ Wheaton
- X Marshfield Clinic Laboratory Only

Minnesota

Michigan

Iowa





Wisconsin's State-Level HIE Planning To Date (Phase 1)

- **Conducted stakeholder assessment and environmental scan**
- **Completed an inventory of statewide public and private functional and technical assets and resources**
- **Identified and prioritized patient/population health-focused and shared-utility HIE technical services**
- **Defined an operating model and governance structure for a state-level HIE**
 - Governor Doyle signed Executive Order 303 creating the new WIRED for Health Board on Dec 1, 2009
 - Creating provision for permanent state-level HIT/HIE public-private entity (SDE)



HITECH Landscape/Approach

- State HIE Cooperative Agreement Program
 - Wisconsin Relay of Electronic Data (WIRED) for Health
- WI HIT Extension Center
- Beacon Community
- Medicaid HIT Plan

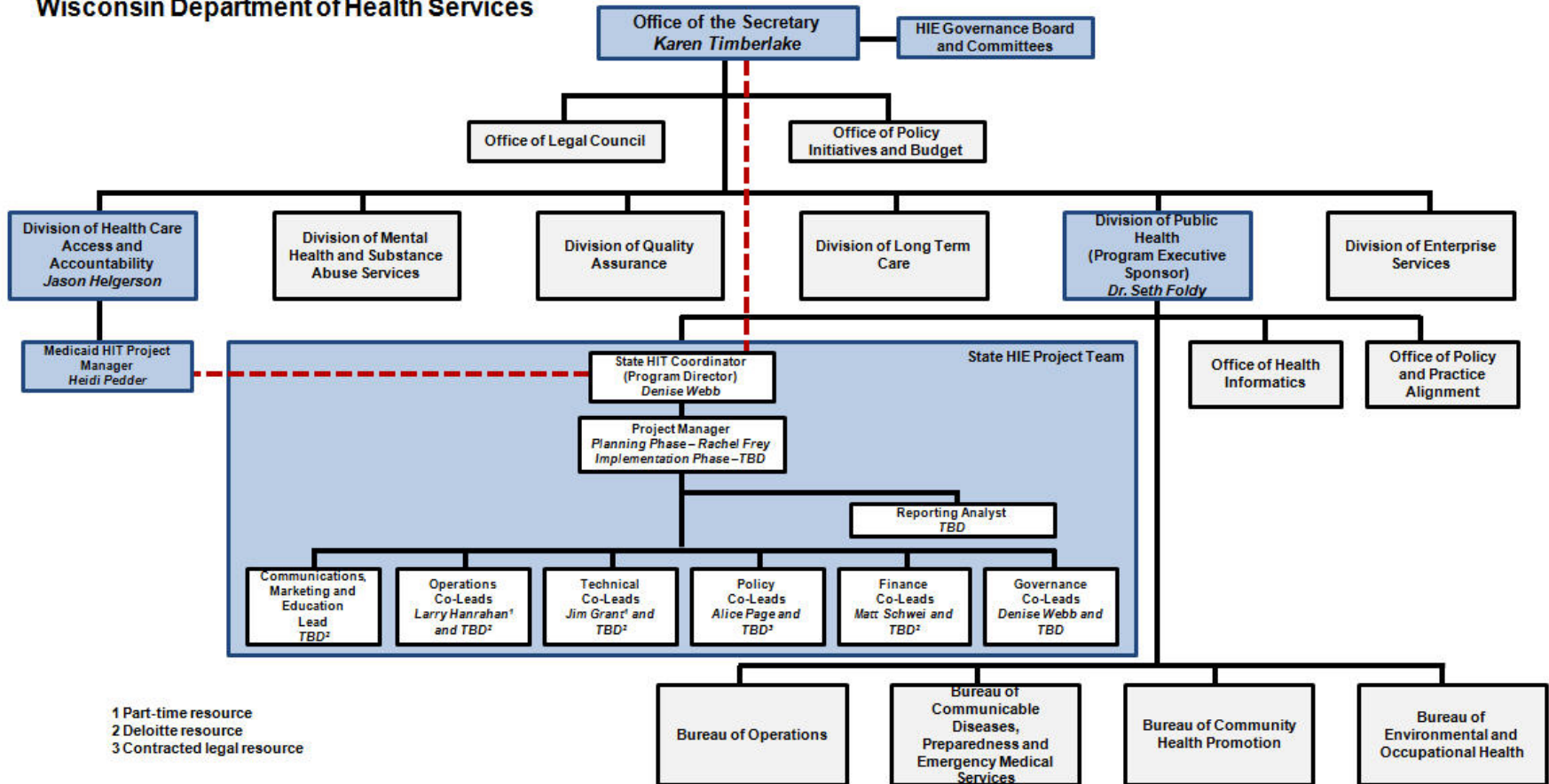


State HIE Cooperative Agreement Program – Expectations of States

- Develop shared technical services
- Remove barriers and create enablers for HIE
- Convene health care stakeholders
- Create an effective model for HIE governance and accountability
- Coordinate an integrated approach with Medicaid and state public health programs
- Develop or update privacy and security policies and laws

WIRED for Health Project

Wisconsin Department of Health Services





State Medicaid HIT Plan

- Agency organization and leadership
- HIT/HIE consulting contract
- Unified HIT/HIE planning and governance
- Current Medicaid involvement in HIT/HIE`
 - Wisconsin Immunization Registry (WIR) (<http://dhs.wisconsin.gov/immunization/WIR.htm>)
 - Wisconsin Health Information Exchange (WHIE, Milwaukee-based RHIO) (<http://www.whie.org/edlink.php>)
 - Wisconsin Health Information Organization (WHIO) Health Analytics Exchange (<http://www.wisconsinhealthinfo.org>)

QUESTIONS



For more information, go to <http://dhs.wisconsin.gov/ehealth>
or send an e-mail to [ehealth @wi.gov](mailto:ehealth@wi.gov)

Protecting and promoting the health and safety of the people of Wisconsin